

What is involved in 'leading' a walk?

1. Plan a route :
 - Look at maps or apps to find a suitable walk. *OS Maps are best, available free via Bing, Google Earth (also free) is good too, as is OpenMaps*— see options below
 - Almost always start and end at a pub.
 - Make it between 5.5 and 6.25 miles
 - Planning is easier if a walk is taken from a list of previous walks – see <http://heathu3a.org.uk/walks>
 - The leaders can provide maps or copies of most walk routes.
2. Walk the route (recce) to make sure it is suitable,
 - take a companion, or ask one of the leaders, we are always glad to do an extra walk. It is unsafe to do it alone.
 - check for problems- blocked paths, broken bridges, electric fences
 - check the distance – see walking apps
3. Try the pub (very important) and book it, let them know firmer numbers will be available a couple of days before the walk.
4. The leaders can give lots of help to get you started with planning, recce-ing. etc.

Mapping a route – details below

- OS Maps
- Bing Maps
- Google Maps
- Google Earth
- Open Street Maps
- County Definitive Maps
- Tracking apps

OS maps

Ordnance Survey maps show paths and features in great detail.

There is an app which will give you all OS maps:

- you can save a walked route
- you can plot a route on your computer and export it to your phone
- you can follow the route in real time on your phone
- annual fee £20 (approx)

Official Quick Start guide : <https://shop.ordnancesurvey.co.uk/os-maps-quick-start/>

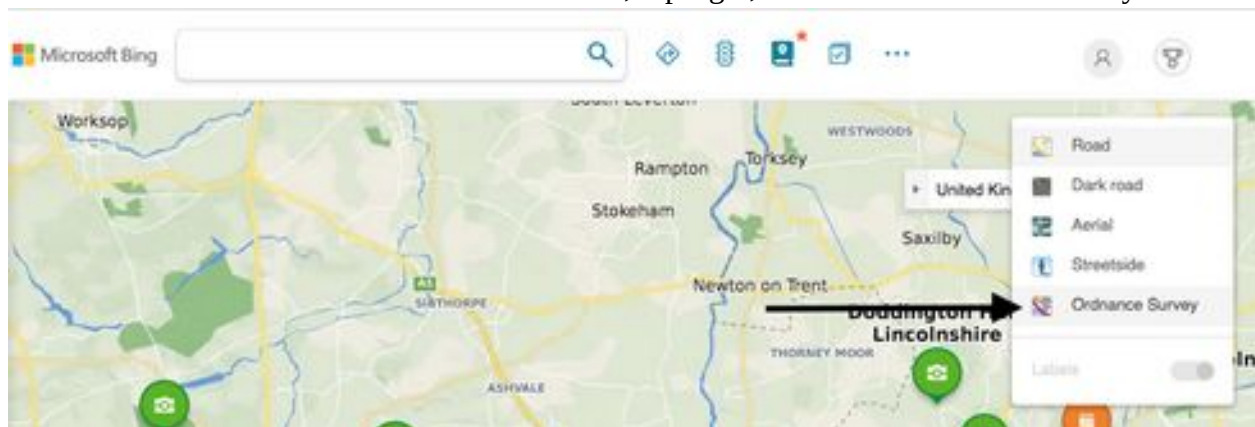
There are GPX versions of rights of way tracks from <http://www.rowmaps.com/>.

Bing maps

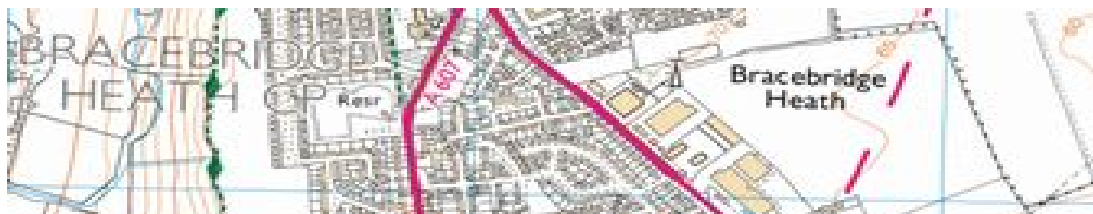
Free : <https://www.bing.com/maps/>

It has an OS map option,

- Zoom in to get the area you need on the map
- Hover over the “Road” button , top right, and select “Ordnance Survey”



Note that OS data is only shown at certain scales, above or below that you get a plain map. At the correct scaling you will get the 25,000:1 info (green paths) or the 50,000:1 info (red pths). 25K example below



- This will allow you to investigate and screen-print a map section.

Measuring distance in Bing maps ...

- You can't save the path, so you will need to do a screenshot
- Right-click on a starting point, select “Measure distance”





- Click once for each point
- Click and drag a point to alter
- Right-click a point to erase



- Drag the tiny circle in the middle of a line to add a new point



Path after "close shape"

- Distance is shown in the left panel.
- Click "Done" or "Close shape" to end

Google maps (browser) <https://www.google.co.uk/maps/>

Using this you can measure distance, but it doesn't show public footpaths, and you can't save a route.

Same measuring procedure as Bing

Google Earth - download from <https://www.google.com/earth/download/gep/agree.html?hl=en-GB>

You can draw paths and save them internally

- Select the small path symbol in the top menu
- Click on the map to start, then click each point,
 - to change a point, drag it
 - to delete, select a point then right-click
 - to add a new point, select the previous point and click elsewhere
- Distance is under the 'Measurement' tab in the small window.
- Enter the title of the path and click OK in the little window.
- Shows satellite view not a map

You can export paths as KML/KMZ files, but not GPX/GPS – use KML there is no difference except that some apps complain about an 'executable' file.

A website that provides Rights of Way is <http://www.rowmaps.com/> .

- KML files for counties - <http://www.rowmaps.com/kmls/> . (GPX also available)
- Lincolnshire : <http://www.rowmaps.com/kmls/LL/> - select the 'converted KML file' link – here is a sample from BBH :



Open Maps → Footpaths shown : <https://www.openstreetmap.org/#map=16/53.2487/-0.0071>
 You can plot routes using <https://www.gpsvisualizer.com/draw/> ,
 There is now an OSM app for Android, OsmAnd, available from Google Play.

The same area using OSM and MapThePaths : <https://www.mapthepaths.org.uk/>



County definitive map → just public footpaths, this no longer shows permissive paths
 colouring is odd, very detailed, useful to get path numbers for reporting problems
<https://www.lincolnshire.gov.uk/coast-countryside/public-rights-way/3>

Various free route tracking apps - Simply Walking, Alltrails

I use Simply Walking. It's free and easy to use. You can export a map in GPX format,
 (I can provide a GPX → KML conversion for Google Earth use)

Others that are not free allow you to plan a route and follow it, like OS maps